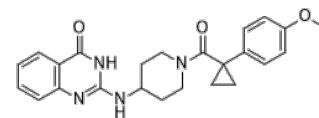


**Product Name** : EP-3945  
**Cat. No.** : PC-23536  
**CAS No.** : 3057176-00-5  
**Molecular Formula** : C<sub>24</sub>H<sub>26</sub>N<sub>4</sub>O<sub>3</sub>  
**Molecular Weight** : 418.50  
**Target** :  
**Solubility** : 10 mM in DMSO



CAS: 3057176-00-5

## Biological Activity

EP-3945 is a potent, selective Mas-related G protein-coupled receptor **MRGPRD** agonist with EC<sub>50</sub> of 211.6 nM at Gq in BRET assay, inactive against over 300 GPCRs.

EP-3945 activates MRGPRD much more potently than β-alanine and GABA.

## References

Wang C, et al. *Cell Rep.* 2024 Nov 23;43(12):114942.

**Caution: Product has not been fully validated for medical applications. Lab Use Only!**

E-mail: tech@probechem.com